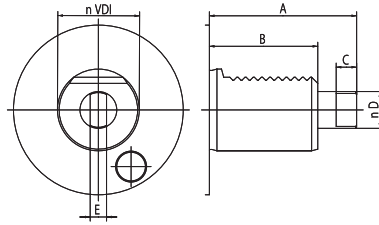
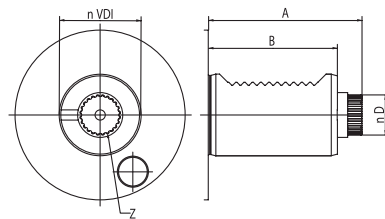


TOOL HOLDERS

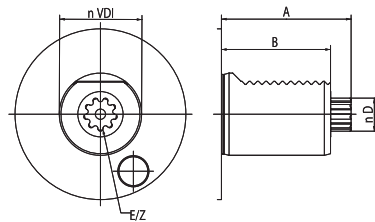
DRIVEN

DIN 1809


VDI	A	B	C	D	E
30	62	45	8	12	6
40	72	53	10	18	8
50	91	78	13	24	13

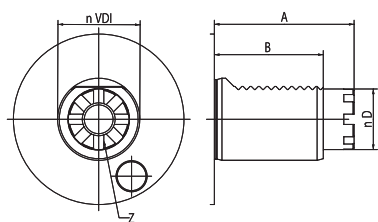
DIN 5480


VDI	A	B	D	Z
30	67	55	15.8	18
40	75	63	19.8	24
50	93	78	23.8	18

DIN 5482


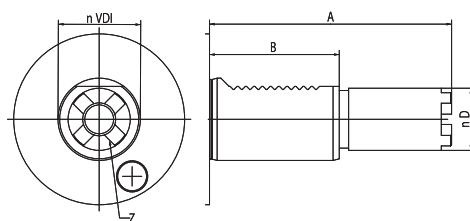
VDI	A	B	D	E	Z
30	55	45	14.5	B15×12	8
40	63	53	16.5	B17×14	9
50	93	78	19.5	B20×17	11

TOEM BARUFFALDI



VDI	A	B	D	Z
30	59	45/53	24	6
40	68	53	32	8
50	84	70	40	8

HAAS



VDI	A	B	D	Z	TIPE
40	104.85	63	30.2	4	1
40	117.55	63	30.2	4	2
40	130.25	63	30.2	4	3

DRIVEN TOOLING SYSTEM

DRIVEN 工具系统

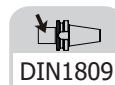
DIN1809 DA DRIVEN HEAD.....	K.06
轴向钻铣动力刀座	K.06
DIN1809 DR DRIVEN HEAD.....	K.07
径向钻铣动力刀座	K.07
DIN1809 DA DRIVEN HEAD	K.08
轴向钻铣动力刀座	K.08
DIN1809 DR DRIVEN HEAD	K.08
径向钻铣动力刀座	K.08
DIN1809 DOA DRIVEN HEAD.....	K.09
轴向偏心钻铣动力刀座	K.09
DIN1809 DOR DRIVEN HEAD.....	K.09
径向偏心钻铣动力刀座	K.09
DIN5480 DA DRIVEN HEAD.....	K.10
轴向钻铣动力刀座	K.10
DIN5480 DR DRIVEN HEAD.....	K.10
径向钻铣动力刀座	K.10
DIN5480 DOA DRIVEN HEAD.....	K.11
轴向偏心钻铣动力刀座	K.11
DIN5480 DOR DRIVEN HEAD	K.11
径向偏心钻铣动力刀座	K.11
DIN5482 DA DRIVEN HEAD.....	K.12
轴向钻铣动力刀座	K.12
DIN5482 DR DRIVEN HEAD	K.12
径向钻铣动力刀座	K.12
DIN5482 DOA DRIVEN HEAD	K.13
轴向偏心钻铣动力刀座	K.13
DIN5482 DOR DRIVEN HEAD	K.13
径向偏心钻铣动力刀座	K.13
TOEM BARUFFALDI DA DRIVEN HEAD.....	K.14
轴向钻铣动力刀座	K.14
TOEM BARUFFALDI DA DRIVEN HEAD.....	K.14
径向钻铣动力刀座	K.14
TOEM BARUFFALDI DA DRIVEN HEAD.....	K.15
轴向偏心钻铣动力刀座	K.15
DTOEM BARUFFALDI DA DRIVEN HEAD.....	K.15
径向偏心钻铣动力刀座	K.15
STEPPED HAASDA DRIVEN HEAD.....	K.16
轴向钻铣动力刀座	K.16
STEPPED HAASDA DRIVEN HEAD.....	K.17
径向钻铣动力刀座	K.17
STEPPED HAAS DOA DRIVEN HEAD.....	K.18
轴向偏心钻铣动力刀座	K.18
STEPPED HAAS DOR DRIVEN HEAD.....	K.18
径向偏心钻铣动力刀座	K.18



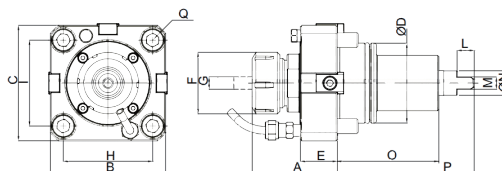
DRIVEN

BMT Axial Driven Head, DIN 1809

轴向钻铣动力刀座

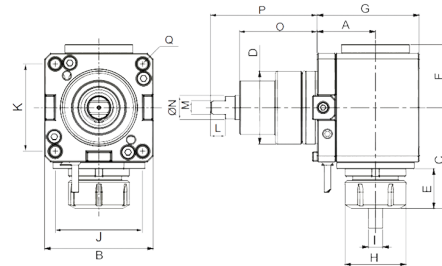
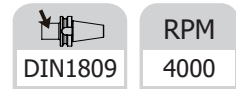


RPM
6000



Size	A	B	C	D	E	F	G	H	I	L	M	N	O	P	Q
DIN1809 BMT55-DAER25-56.7	56.7	85	85	55	29	42	ER25	64	64	10	8	17	75	103.5	M10
DIN1809 BMT65-DAER32-68.4	68.5	94	94	65	30	50	ER32	73	70	14	10	20	81	111.5	M12
DIN1809 BMT75-DAER40-78	78	112	112	75	30	63	ER40	90	90	15	14	23	80	110	M12
DIN1809 BMT85-DAER50-108	108	125	125	85	44	78	ER50	100	100	20	16	27.5	96	136	M12

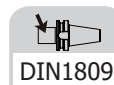
BMT Radial Driven Head, DIN 1809 径向钻铣动力刀座

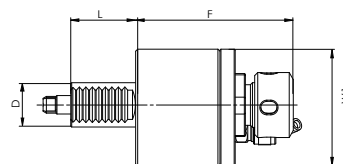
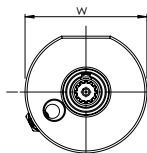


Size	A	B	C	D	E	F	G	H	I	J	K	L	M	N	O	P	Q
DIN1809 BMT55-DRER25-60	60	85	78.5	55	27.5	50	86	42	ER25	64	64	10	8	17	75	103.5	M10
DIN1809 BMT55-DRER25-70	70	85	78.5	55	27.5	50	86	42	ER25	64	64	10	8	17	75	103.5	M10
DIN1809 BMT55-DRER25-85	85	85	78.5	55	27.5	50	86	42	ER25	64	64	10	8	17	75	103.5	M10
DIN1809 BMT65-DRER32-72	72	94	92	65	36	54.5	108	50	ER32	73	70	14	10	20	81	111.5	M12
DIN1809 BMT65-DRER32-100	100	94	92	65	36	54.5	136	50	ER32	73	70	14	10	20	81	111.5	M12
DIN1809 BMT75-DRER40-60	60	112	104	75	41	65	105	63	ER40	90	90	15	14	23	80	110	M12
DIN1809 BMT75-DRER40-90	90	112	104	75	41	65	135	63	ER40	90	90	15	14	23	80	110	M12
DIN1809 BMT75-DRER40-125	125	112	104	75	41	65	170	63	ER40	90	90	15	14	23	80	110	M12
DIN1809 BMT85-DRER40-110	110	125	134.8	85	54.3	75.5	160	78	ER50	100	100	20	16	27.5	96	136	M12

VDI Axial Driven Head, DIN 1809

轴向钻铣动力刀座

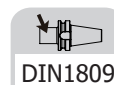

RPM
6000

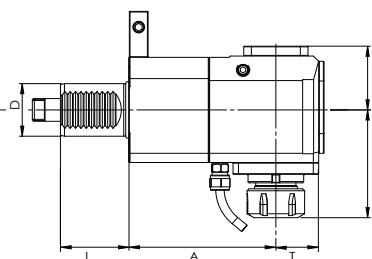
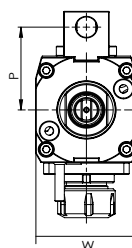
I (rev.)
1:1


Size	VDI	Collet	F	L	W	W1	Nm	Internal Cooling
DIN1809 VDI30-DAER25-87	30	ER25	87	45	64	68	28	no
DIN1809 VDI30-DAER25K-87	30	ER25	87	45	64	68	28	yes
DIN1809 VDI40-DAER25-105	40	ER25	105	53	80	86	50	no
DIN1809 VDI40-DAER25K-105	40	ER25	105	53	80	86	50	yes
DIN1809 VDI40-DAER32-108	40	ER32	108	53	80	86	50	no
DIN1809 VDI40-DAER32K-108	40	ER32	108	53	80	86	50	yes
DIN1809 VDI40-DAER32-95	40	ER32	95	53	80	86	50	no
DIN1809 VDI40-DAER32K-95	40	ER32	95	53	80	86	50	yes

VDI Radial Driven Head, DIN 1809

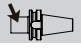
径向钻铣动力刀座

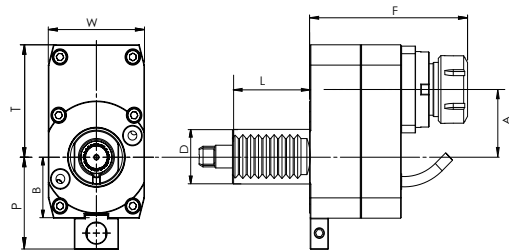

RPM
6000

I (rev.)
1:1


Size	VDI	Collet	A	B	F	L	P	T	W	Nm	Internal Cooling	Direction
DIN1809 VDI30-DRER25-55	30	ER25	55	48	63	45	48	29	64	28	no	right
DIN1809 VDI30-DRER25K-55	30	ER25	55	51	63	45	48	29	64	28	yes	right
DIN1809 VDI40-DRER25-80	40	ER25	80	59	70	53	71	36	75	50	no	right
DIN1809 VDI40-DRER25K-80	40	ER25	80	62	70	53	71	36	75	50	yes	right
DIN1809 VDI40-DRER32-80	40	ER32	80	59	74	53	71	36	75	50	no	right
DIN1809 VDI40-DRER32K-80	40	ER32	80	62	74	53	71	36	75	50	yes	right
DIN1809 VDI40-DRER25-100	40	ER25	100	59	70	53	-	36	75	50	no	left
DIN1809 VDI40-DRER25K-100	40	ER25	100	62	70	53	-	36	75	50	yes	left
DIN1809 VDI40-DRER32-100	40	ER32	100	59	74	53	-	36	75	50	no	left
DIN1809 VDI40-DRER32K-100	40	ER32	100	62	74	53	-	36	75	50	yes	left

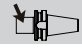
VDI Axial Driven Head, Offset, DIN 1809 轴向偏心钻铣动力刀座

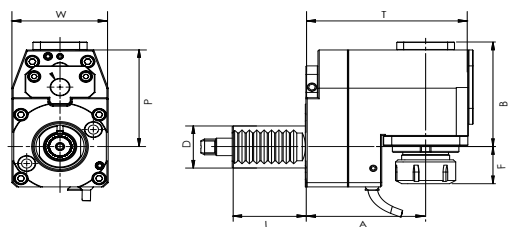
 DIN1809	RPM 12000	I (rev.) 1:2
--	--------------	-----------------



Size	VDI	Collet	A	B	F	L	P	T	W	Nm	Cooling
DIN1809 VDI30-DOAER25-50-106	30	ER25	50	40	106	45	48	90	78	14	EXT

VDI Radial Driven Head, Offset, DIN 1809 径向偏心钻铣动力刀座

 DIN1809	I (rev.) 1:1
--	-----------------

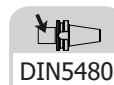
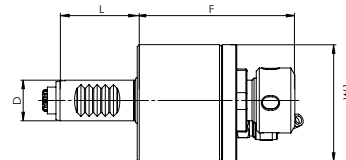
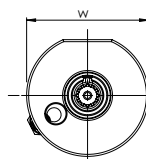


Size	VDI	Collet	A	B	F	L	P	T	W	Nm	RPM	Cooling
DIN1809 VDI30-DORER25-75-40	30	ER25	75	71	40	45	48	101	64	28	6000	no
DIN1809 VDI30-DORER25K-75-40	30	ER25	75	74	40	45	48	101	64	28	6000	yes
DIN1809 VDI40-DORER25-120-37	40	ER25	120	92	37	53	71	120	75	60	4000	no
DIN1809 VDI40-DORER25K-120-37	40	ER25	120	95	37	53	71	120	75	60	4000	yes
DIN1809 VDI40-DORER32-120-41	40	ER32	120	92	41	53	71	120	75	60	4000	no
DIN1809 VDI40-DORER32K-120-41	40	ER32	120	95	41	53	71	120	75	60	4000	yes

DRIVEN

VDI Axial Driven Head, DIN 5480

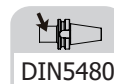
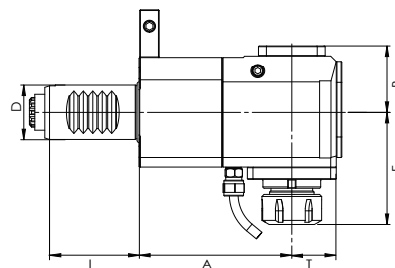
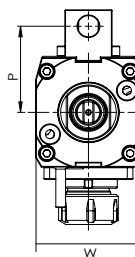
轴向钻铣动力刀座


RPM
6000
I (rev.)
1:1


Size	VDI	Collet	F	L	W	W1	Nm	Internal Cooling
DIN5480 VDI30-DAER25-87	30	ER25	87	55	62	69	28	no
DIN5480 VDI30-DAER25K-87	30	ER25	87	55	62	69	28	yes
DIN5480 VDI40-DAER25-105	40	ER25	105	63	76	94	50	no
DIN5480 VDI40-DAER25K-105	40	ER25	105	63	76	94	50	yes
DIN5480 VDI40-DAER32-108	40	ER32	108	63	76	94	50	no
DIN5480 VDI40-DAER32K-108	40	ER32	108	63	76	94	50	yes

VDI Radial Driven Head, DIN 5480


径向钻铣动力刀座

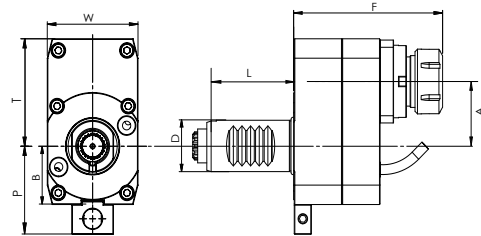

RPM
6000
I (rev.)
1:1


Size	VDI	Collet	A	B	F	L	P	T	W	Nm	Internal Cooling	Direction
DIN5480 VDI30-DRER25-55	30	ER25	55	48	63	55	56	26	64	28	no	right
DIN5480 VDI30-DRER25K-55	30	ER25	55	51	63	55	56	26	64	28	yes	right
DIN5480 VDI30-DRER25-85	30	ER25	85	48	63	55	56	26	64	28	no	right
DIN5480 VDI30-DRER25K-85	30	ER25	85	51	63	55	56	26	64	28	yes	right
DIN5480 VDI30-DRER25-100	30	ER25	100	48	63	55	56	29	64	28	no	right
DIN5480 VDI30-DRER25K-100	30	ER25	100	51	63	55	56	29	64	28	yes	right
DIN5480 VDI40-DRER25-80	40	ER25	80	59	70	63	65	33	75	50	no	right
DIN5480 VDI40-DRER25K-80	40	ER25	80	62	70	63	65	33	75	50	yes	right
DIN5480 VDI40-DRER25-100	40	ER25	100	59	70	63	65	33	75	50	no	right
DIN5480 VDI40-DRER25K-100	40	ER25	100	62	70	63	65	33	75	50	yes	right
DIN5480 VDI40-DRER32-80	40	ER32	80	59	74	63	65	33	75	50	no	right
DIN5480 VDI40-DRER32K-80	40	ER32	80	62	74	63	65	33	75	50	yes	right
DIN5480 VDI40-DRER32-100	40	ER32	100	59	74	63	65	33	75	50	no	right
DIN5480 VDI40-DRER32K-100	40	ER32	100	62	74	63	65	33	75	50	yes	right

VDI Axial Driven Head, Offset, DIN 5480

轴向偏心钻铣动力刀座


 DIN5480	RPM 12000	I (rev.) 1:2
--	--------------	-----------------

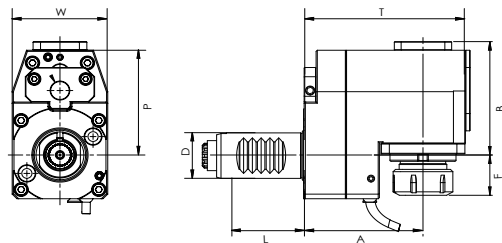


Size	VDI	Collet	A	B	F	L	P	T	W	Nm	Cooling
DIN5480 VDI30-DOAER25-50-102	30	ER25	50	47	102	55	56	90	78	14	EXT

VDI Radial Driven Head, Offset, DIN 5480

径向偏心钻铣动力刀座

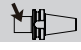
 DIN5480	RPM 6000	I (rev.) 1:1
--	-------------	-----------------

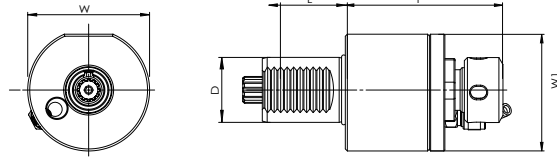


Size	VDI	Collet	A	B	F	L	P	T	W	Nm	Cooling
DIN5480 VDI30-DORER25-75-39.8	30	ER25	75	71	39.8	55	56	101	64	28	EXT
DIN5480 VDI30-DORER25K-75-39.8	30	ER25	75	73.5	39.8	55	56	101	64	28	EXT+INT
DIN5480 VDI40-DORER25-120-36.6	40	ER25	120	92.2	36.6	63	65	153	75	50	EXT
DIN5480 VDI40-DORER25K-120-36.6	40	ER25	120	95.2	36.6	63	65	153	75	50	EXT+INT
DIN5480 VDI40-DORER32-120-40.6	40	ER32	120	92.2	40.6	63	65	153	75	50	EXT
DIN5480 VDI40-DORER32K-120-40.6	40	ER32	120	95.2	40.6	63	65	153	75	50	EXT+INT

VDI Axial Driven Head, DIN 5482

轴向钻铣动力刀座

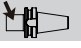
 DIN5482	RPM 6000	I (rev.) 1:1
--	-------------	-----------------

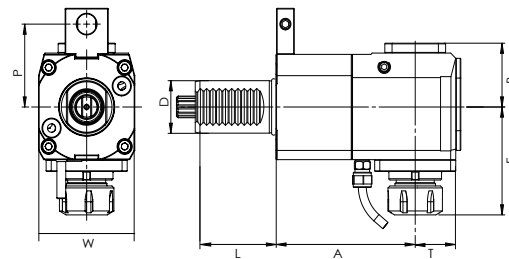


Size	VDI	Collet	F	L	W	W1	Nm	Internal Cooling
DIN5482 VDI30-DAER25-87	30	ER25	87	45	62	69	28	no
DIN5482 VDI30-DAER25K-87	30	ER25	87	45	62	69	28	yes
DIN5482 VDI40-DAER25-105	40	ER25	105	53	76	94	50	no
DIN5482 VDI40-DAER25K-105	40	ER25	105	53	76	94	50	yes
DIN5482 VDI40-DAER32-108	40	ER32	108	53	76	94	50	no
DIN5482 VDI40-DAER32K-108	40	ER32	108	53	76	94	50	yes

VDI Radial Driven Head, DIN 5482

径向钻铣动力刀座

 DIN5482	RPM 6000	I (rev.) 1:1
--	-------------	-----------------

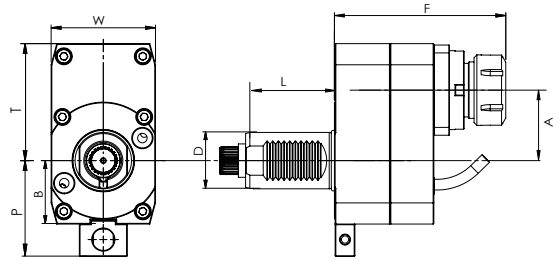


Size	VDI	Collet	A	B	F	L	P	T	W	Nm	Internal Cooling	Direction
DIN5482 VDI30-DRER25-55	30	ER25	55	48	63	45	48	26	64	28	no	right
DIN5482 VDI30-DRER25K-55	30	ER25	55	51	63	45	48	26	64	28	yes	right
DIN5482 VDI40-DRER25-80	40	ER25	80	59	70	53	71	33	75	50	no	right
DIN5482 VDI40-DRER25K-80	40	ER25	80	62	70	53	71	33	75	50	yes	right
DIN5482 VDI40-DRER32-80	40	ER32	80	59	74	53	71	33	75	50	no	right
DIN5482 VDI40-DRER32K-80	40	ER32	80	62	74	53	71	33	75	50	yes	right

VDI Axial Driven Head, Offset, DIN 5482

轴向偏心钻铣动力刀座

	RPM	I (rev.)
DIN5482	12000	1:2

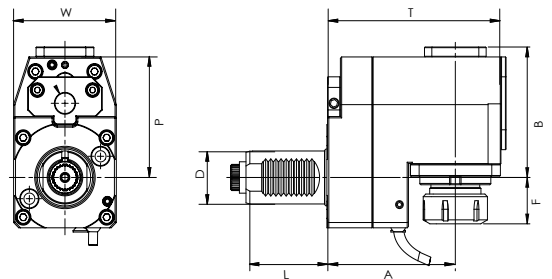


Size	VDI	Collet	A	B	F	L	P	T	W	Nm	Cooling
DIN5482 VDI30-DOAER25-50-102	30	ER25	50	40	102	45	48	90	78	14	EXT

VDI Radial Driven Head, Offset, DIN 5482

径向偏心钻铣动力刀座

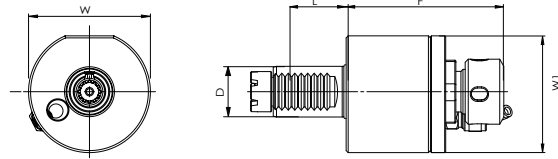
	I (rev.)
DIN 5482	1:1



Size	VDI	Collet	A	B	F	L	P	T	W	Nm	RPM	Cooling
DIN5482 VDI30-DORER25-75-40	30	ER25	75	71	40	45	48	101	64	28	6000	no
DIN5482 VDI30-DORER25K-75-40	30	ER25	75	74	40	45	48	101	64	28	6000	yes
DIN5482 VDI40-DORER25-120-37	40	ER25	120	92	37	53	71	125.5	75	60	4000	no
DIN5482 VDI40-DORER25K-120-37	40	ER25	120	95	37	53	71	125.5	75	60	4000	yes
DIN5482 VDI40-DORER32-120-41	40	ER32	120	92	41	53	71	125.5	75	60	4000	no
DIN5482 VDI40-DORER32K-120-41	40	ER32	120	95	41	53	71	125.5	75	60	4000	yes

VDI Axial Driven Head, TOEM 轴向钻铣动力刀座

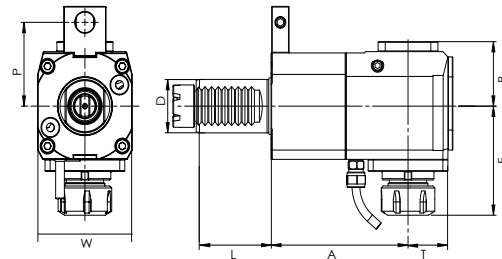
	RPM	I (rev.)
TOEM BARUFFALDI	6000	1:1



Size	VDI	Collet	F	L	W	W1	Nm	Internal Cooling	Z
TOME VDI30-DAER25-87	30	ER25	87	45	64	68	28	no	6
TOME VDI30-DAER25K-87	30	ER25	87	45	64	68	28	yes	6
TOME VDI40-DAER25-105	40	ER25	105	53	80	86	50	no	8
TOME VDI40-DAER25K-105	40	ER25	105	53	80	86	50	yes	8
TOME VDI40-DAER32-108	40	ER32	108	53	80	86	50	no	8
TOME VDI40-DAER32K-108	40	ER32	108	53	80	86	50	yes	8

VDI Radial Driven Head, TOEM 径向钻铣动力刀座

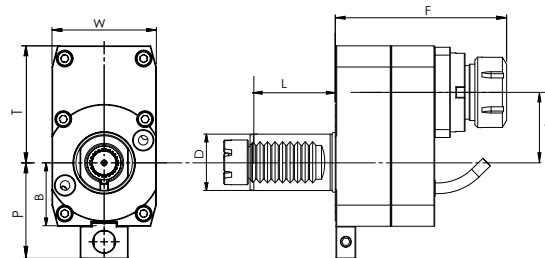
	RPM	I (rev.)
TOEM BARUFFALDI	6000	1:1



Size	VDI	Collet	A	B	F	L	P	T	W	Nm	Internal Cooling	Direction	Z
TOME VDI30-DRER25-55	30	ER25	55	48	63	45	48	29	64	28	no	right	6
TOME VDI30-DRER25K-55	30	ER25	55	51	63	45	48	29	64	28	yes	right	6
TOME VDI40-DRER25-80	40	ER25	80	59	70	53	71	36	75	50	no	right	8
TOME VDI40-DRER25K-80	40	ER25	80	62	70	53	71	36	75	50	yes	right	8
TOME VDI40-DRER32-80	40	ER32	80	59	74	53	71	36	75	50	no	right	8
TOME VDI40-DRER32K-80	40	ER32	80	62	74	53	71	36	75	50	yes	right	8

VDI Axial Driven Head, Offset, TOEM 轴向偏心钻铣动力刀座

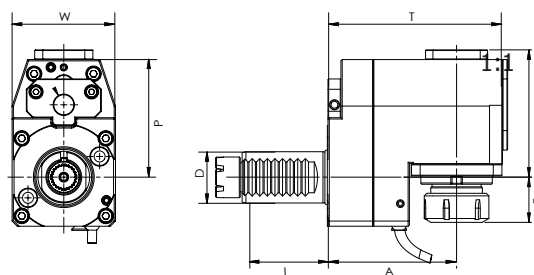
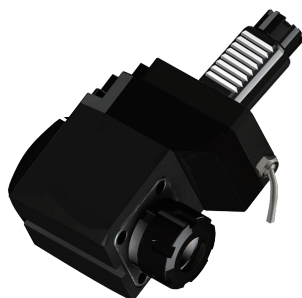
	RPM	I (rev.)
TOEM BARUFFALDI	12000	1:2



Size	VDI	Collet	A	B	F	L	P	T	W	Nm	Cooling	Z
TOME VDI30-DOAER25-50-106	30	ER25	50	40	106	45	48	90	78	14	EXT	6

VDI Radial Driven Head, Offset, TOEM 径向偏心钻铣动力刀座

	RPM	I (rev.)
TOEM BARUFFALDI	6000	1:1

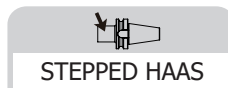


Size	VDI	Collet	A	B	F	L	P	T	W	Nm	Cooling	Z
TOME VDI30-DORER25-75-40	30	ER25	75	71	40	45	48	101	64	28	no	6
TOME VDI30-DORER25K-75-40	30	ER25	75	74	40	45	48	101	64	28	yes	6
TOME VDI40-DORER25-120-37	40	ER25	120	92	37	53	71	120	75	60	no	-
TOME VDI40-DORER25K-120-37	40	ER25	120	95	37	53	71	120	75	60	yes	-
TOME VDI40-DORER32-120-41	40	ER32	120	92	41	53	71	120	75	60	no	-
TOME VDI40-DORER32K-120-41	40	ER32	120	95	41	53	71	120	75	60	yes	-

DRIVEN

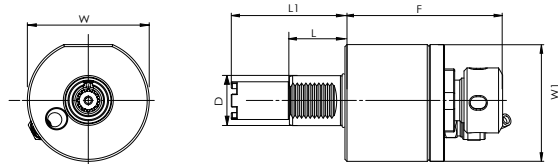
VDI Axial Driven Head, STEPPED HAAS

轴向钻铣动力刀座




RPM
6000

I (rev.)
1:1



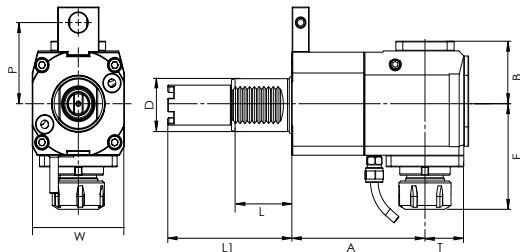
Size	VDI	Collet	F	L	L1	W	W1	Nm	Internal Cooling
HAAS VDI40-DAER25-105	40	ER25	105	63	104.85	76	94	50	no
HAAS VDI40-DAER25K-105	40	ER25	105	63	104.85	76	94	50	yes
HAAS VDI40-DAER32-108	40	ER32	108	63	104.85	76	94	50	no
HAAS VDI40-DAER32K-108	40	ER32	108	63	104.85	76	94	50	yes
HAAS VDI40-DAER25-105L	40	ER25	105	63	117.55	76	94	50	no
HAAS VDI40-DAER25K-105L	40	ER25	105	63	117.55	76	94	50	yes
HAAS VDI40-DAER32-108L	40	ER32	108	63	117.55	76	94	50	no
HAAS VDI40-DAER32K-108L	40	ER32	108	63	117.55	76	94	50	yes
HAAS VDI40-DAER25-105EL	40	ER25	105	63	130.25	76	94	50	no
HAAS VDI40-DAER25K-105EL	40	ER25	105	63	130.25	76	94	50	yes
HAAS VDI40-DAER32-108EL	40	ER32	108	63	130.25	76	94	50	no
HAAS VDI40-DAER32K-108EL	40	ER32	108	63	130.25	76	94	50	yes

VDI Radial Driven Head, STEPPED HAAS 径向钻铣动力刀座


 STEPPED HAAS

RPM
 6000

I (rev.)
 1:1

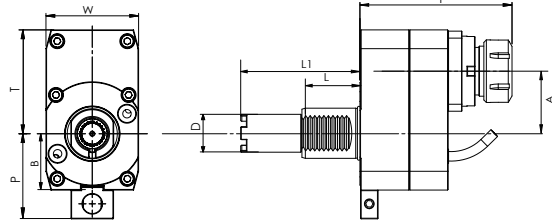
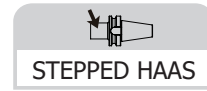


Size	VDI	Collet	A	B	F	L	L1	P	T	W	Nm	Internal Cooling	Direction
HAAS VDI40-DRER25-69	40	ER25	69	59	70	63	104.85	82	36	75	60	no	left
HAAS VDI40-DRER25K-69	40	ER25	69	62	70	63	104.85	82	36	75	50	yes	left
HAAS VDI40-DRER32-69	40	ER32	69	59	74	63	104.85	82	36	75	50	no	left
HAAS VDI40-DRER32K-69	40	ER32	69	62	74	63	104.85	82	36	75	50	yes	left
HAAS VDI40-DRER25-69L	40	ER25	69	59	70	63	117.55	82	36	75	50	no	left
HAAS VDI40-DRER25K-69L	40	ER25	69	62	70	63	117.55	82	36	75	50	yes	left
HAAS VDI40-DRER32-69L	40	ER32	69	59	74	63	117.55	82	36	75	50	no	left
HAAS VDI40-DRER32K-69L	40	ER32	69	62	74	63	117.55	82	36	75	50	yes	left
HAAS VDI40-DRER25-69EL	40	ER32	69	59	70	63	130.25	82	36	75	50	no	left
HAAS VDI40-DRER25K-69EL	40	ER25	69	62	70	63	130.25	82	36	75	50	yes	left
HAAS VDI40-DRER32-69EL	40	ER25	69	59	74	63	130.25	82	36	75	50	no	left
HAAS VDI40-DRER32K-69EL	40	ER32	69	62	74	63	130.25	82	36	75	50	yes	left
HAAS VDI40-DRER25-80	40	ER25	80	59	70	63	104.85	82	33	75	50	no	left
HAAS VDI40-DRER25K-80	40	ER25	80	62	70	63	104.85	82	33	75	50	yes	left
HAAS VDI40-DRER32-80	40	ER32	80	59	74	63	104.85	82	33	75	50	no	left
HAAS VDI40-DRER32K-80	40	ER32	80	62	74	63	104.85	82	33	75	50	yes	left
HAAS VDI40-DRER25-80L	40	ER25	80	59	70	63	117.55	82	33	75	50	no	left
HAAS VDI40-DRER25K-80L	40	ER25	80	62	70	63	117.55	82	33	75	50	yes	left
HAAS VDI40-DRER32-80L	40	ER32	80	59	74	63	117.55	82	33	75	50	no	left
HAAS VDI40-DRER32K-80L	40	ER32	80	62	74	63	117.55	82	33	75	50	yes	left
HAAS VDI40-DRER25-80EL	40	ER25	80	59	70	63	130.25	82	33	75	50	no	left
HAAS VDI40-DRER25K-80EL	40	ER25	80	62	70	63	130.25	82	33	75	50	yes	left
HAAS VDI40-DRER32-80EL	40	ER32	80	59	74	63	130.25	82	33	75	50	no	left
HAAS VDI40-DRER32K-80EL	40	ER32	80	62	74	63	130.25	82	33	75	50	yes	left

DRIVEN

VDI Axial Driven Head, Offset, STEPPED HAAS

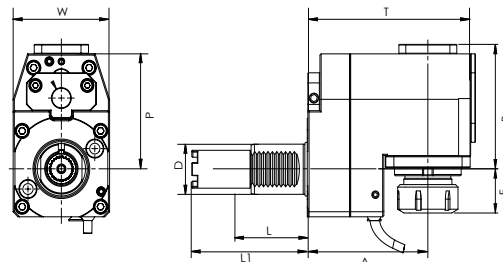
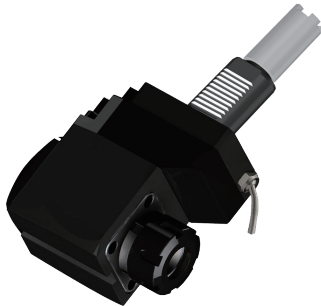
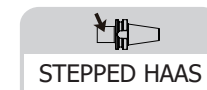
轴向偏心钻铣动力刀座



Size	VDI	Collet	A	F	L	L1	P	T	W	Cooling	Direction
HAAS VDI40-DOAER25-50-63	40	ER25	50	106	63	140.85	82	90	78	no	left
HAAS VDI40-DOAER25K-50-63	40	ER25	50	106	63	140.85	82	90	78	yes	left
HAAS VDI40-DOAER25-50-63L	40	ER25	50	106	63	117.55	82	90	78	no	left
HAAS VDI40-DOAER25K-50-63L	40	ER25	50	106	63	117.55	82	90	78	yes	left
HAAS VDI40-DOAER25-50-63EL	40	ER25	50	106	63	130.25	82	90	78	no	left
HAAS VDI40-DOAER25K-50-63EL	40	ER25	50	106	63	130.25	82	90	78	yes	left

VDI Radial Driven Head, Offset, STEPPED HAAS

径向偏心钻铣动力刀座



Size	VDI	Collet	A	B	F	L	L1	P	T	W	Cooling	Direction
HAAS VDI40-DORER25-120-37	40	ER25	120	92	37	63	104.85	82	33	75	no	left
HAAS VDI40-DORER25K-120-37	40	ER25	120	95	37	63	104.85	82	33	75	yes	left
HAAS VDI40-DORER32-120-37	40	ER32	120	92	41	63	104.85	82	33	75	no	left
HAAS VDI40-DORER32K-120-37	40	ER32	120	95	41	63	104.85	82	33	75	yes	left
HAAS VDI40-DORER25-120-37L	40	ER25	120	92	37	63	117.55	82	33	75	no	left
HAAS VDI40-DORER25K-120-37L	40	ER25	120	95	37	63	117.55	82	33	75	yes	left
HAAS VDI40-DORER32-120-37L	40	ER32	120	92	41	63	117.55	82	33	75	no	left
HAAS VDI40-DORER32K-120-37L	40	ER32	120	95	41	63	117.55	82	33	75	yes	left
HAAS VDI40-DORER25-120-37EL	40	ER25	120	92	37	63	130.25	82	33	75	no	left
HAAS VDI40-DORER25K-120-37EL	40	ER25	120	95	37	63	130.25	82	33	75	yes	left
HAAS VDI40-DORER32-120-37EL	40	ER32	120	92	41	63	130.25	82	33	75	no	left
HAAS VDI40-DORER32K-120-37EL	40	ER32	120	95	41	63	130.25	82	33	75	yes	left