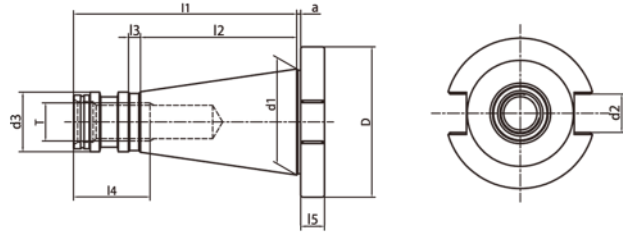


NT

TOOL HOLDERS

NT Taper Standard

NT 锥柄标准



| Size | D | d1 | d2 | d3 | a | l1 | l2 | l3 | l4 | l5 | T |
|------|------|-------|------|-------|-----|-------|-------|----|----|----|-----|
| NT30 | 50 | 31.75 | 16.1 | 17.11 | 1.6 | 68.4 | 48.4 | 3 | 24 | 8 | M12 |
| NT40 | 63 | 44.45 | 16.1 | 25 | 1.6 | 93.4 | 65.4 | 5 | 32 | 10 | M16 |
| NT50 | 97.5 | 69.85 | 25.7 | 39.29 | 3.2 | 126.8 | 101.8 | 8 | 47 | 12 | M24 |

Taper standard: DIN 2080

Material: Alloyed case hardened steel

Surface Treatment: Blackening and Bright

Taper tolerance: <AT3

Hardness: HRC 58-62

Carbon depth: 0.8±0.2mm

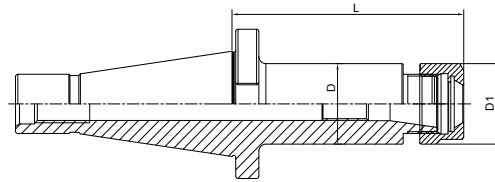
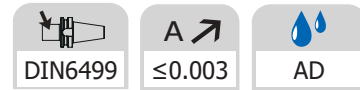
Surface Roughness: Ra<0.005mm

NT TOOLING SYSTEM
NT 工具系统

| | |
|----------------------------------|------|
| ER Collet Chuck..... | E.04 |
| ER弹簧夹头刀柄 | E.04 |
| Power Milling Chuck..... | E.06 |
| 强力铣刀柄 | E.06 |
| OZ Collet Chuck..... | E.07 |
| OZ夹头刀柄 | E.07 |
| Face Mill Holder | E.08 |
| 面铣刀柄 | E.08 |
| Combi Shell Mill Holder..... | E.09 |
| 混合插入式铣刀柄 | E.09 |
| End Mill Holder..... | E.10 |
| 侧固刀柄 | E.10 |
| Morse Taper Adapter..... | E.11 |
| 带扁尾莫氏刀柄 | E.11 |
| Morse Taper Adapter | E.12 |
| 带螺纹孔莫氏刀柄 | E.12 |
| Tool Holder Adatper Sleeve | E.13 |
| 转换刀柄..... | E.13 |
| Drill Chuck Adapter..... | E.14 |
| 钻接杆 | E.14 |
| APU Drill Chuck Holder | E.15 |
| APU钻夹头刀柄..... | E.15 |
| Quick Change Tapping Chuck | E.16 |
| 弹性快换攻丝刀柄 | E.16 |



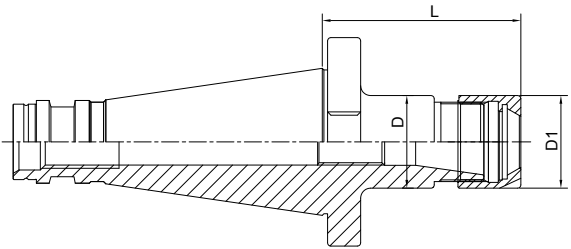
NT

ER Collet Chuck
ER 弹簧夹头刀柄


| Size | D | D1 | L | Capacity |
|-------------------|----|----|----|----------|
| NT30-ER16A-50 | 28 | 28 | 50 | 1-10 |
| NT30-ER20A-50 | 34 | 34 | 50 | 1-13 |
| NT30-ER25-50 | 42 | 42 | 50 | 2-16 |
| NT30-ER32-50 | 40 | 50 | 50 | 2-20 |
| NT30-ER40-80 | 50 | 63 | 80 | 4-26 |
| NT40-ER16-50(OTT) | 28 | 28 | 50 | 1-10 |
| NT40-ER20-50(OTT) | 34 | 34 | 50 | 1-13 |
| NT40-ER25-50(OTT) | 42 | 42 | 50 | 1-13 |
| NT40-ER32-50(OTT) | 50 | 50 | 50 | 3-20 |
| NT40-ER40-80(OTT) | 50 | 63 | 80 | 4-26 |
| NT50-ER25-60(OTT) | 42 | 42 | 60 | 1-13 |
| NT50-ER32-70(OTT) | 50 | 50 | 70 | 1-20 |
| NT50-ER40-80(OTT) | 63 | 63 | 70 | 2-26 |
| NT50-ER50-90(OTT) | 70 | 78 | 90 | 6-34 |

NT


ER Collet Chuck with Mini Nut
ER 弹簧夹头刀柄

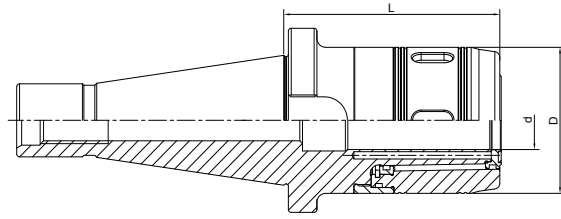


| Size | D | D1 | L | Capacity |
|--------------------|----|----|----|----------|
| NT30-ER16M-70 | 22 | 22 | 70 | 1-10 |
| NT30-ER20M-70 | 28 | 28 | 70 | 1-13 |
| NT30-ER25M-70 | 35 | 35 | 70 | 2-16 |
| NT40-ER16M-60(OTT) | 22 | 22 | 60 | 1-10 |
| NT40-ER20M-60(OTT) | 28 | 28 | 60 | 1-13 |
| NT40-ER25M-60(OTT) | 35 | 35 | 60 | 2-16 |

NT



Power Milling Chuck 强力铣刀柄



| Size | d | D | L | Capacity | M |
|--------------------|----|----|-----|----------|-----|
| NT40-HC25-105(OTT) | 25 | 59 | 105 | 3-20; 25 | M16 |
| NT40-HC32-105(OTT) | 32 | 72 | 105 | 3-25; 32 | M16 |
| NT50-HC32-110(OTT) | 32 | 72 | 110 | 3-25; 32 | M24 |
| NT50-HC42-120(OTT) | 42 | 99 | 120 | 3-32; 42 | M24 |

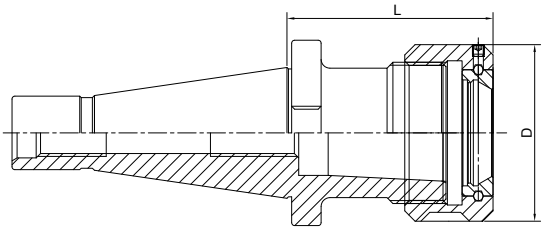


OZ Collet Chuck
OZ 夹头刀柄

DIN6391

A ↗
≤0.005

AD

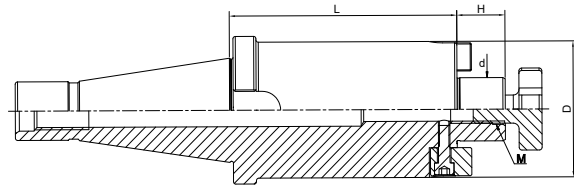
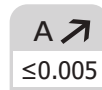


| Size | D | L | Capacity |
|-------------------|----|----|----------|
| NT30-OZ16-50 | 43 | 50 | 2-16 |
| NT30-OZ25-70 | 60 | 70 | 3-25 |
| NT40-OZ16-70(OTT) | 43 | 70 | 2-16 |
| NT40-OZ25-70(OTT) | 60 | 70 | 3-25 |
| NT40-OZ32-80(OTT) | 72 | 80 | 6-32 |
| NT50-OZ25-70(OTT) | 60 | 70 | 3-25 |
| NT50-OZ32-80(OTT) | 72 | 80 | 6-32 |

NT



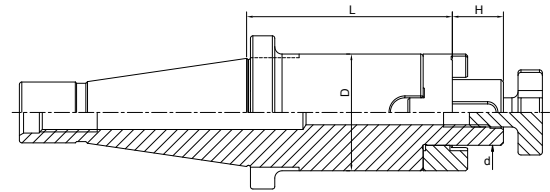
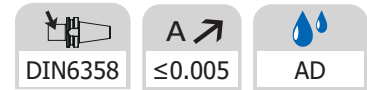
Face Mill Holder 面铣刀柄



| Size | d | D | L | H | M |
|--------------------|----|----|----|----|-----|
| NT30-FMB16-30 | 16 | 38 | 30 | 17 | M8 |
| NT30-FMB22-30 | 22 | 48 | 30 | 19 | M10 |
| NT30-FMB27-45 | 27 | 58 | 45 | 21 | M12 |
| NT30-FMB32-50 | 32 | 78 | 50 | 24 | M16 |
| | | | | | |
| NT40-FMB16-30(OTT) | 16 | 38 | 30 | 17 | M8 |
| NT40-FMB22-30(OTT) | 22 | 48 | 30 | 19 | M10 |
| NT40-FMB27-30(OTT) | 27 | 58 | 30 | 21 | M12 |
| NT40-FMB32-30(OTT) | 32 | 78 | 30 | 24 | M16 |
| NT40-FMB40-30(OTT) | 40 | 88 | 30 | 27 | M20 |
| | | | | | |
| NT50-FMB16-30(OTT) | 16 | 38 | 30 | 17 | M8 |
| NT50-FMB22-35(OTT) | 22 | 48 | 35 | 19 | M10 |
| NT50-FMB27-35(OTT) | 27 | 58 | 35 | 21 | M12 |
| NT50-FMB32-40(OTT) | 32 | 78 | 40 | 24 | M16 |
| NT50-FMB40-40(OTT) | 40 | 88 | 40 | 27 | M20 |

NT


Combi Shell Mill Holder
混合插入式铣刀柄

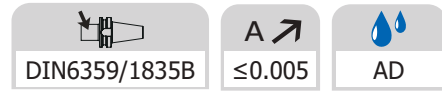


| Size | d | D | L | L1 |
|---------------------|----|----|----|----|
| NT30-SEMC16-35 | 16 | 32 | 35 | 17 |
| NT30-SEMC22-35 | 22 | 40 | 35 | 19 |
| NT30-SEMC27-35 | 27 | 48 | 35 | 21 |
| NT30-SEMC32-50 | 32 | 58 | 50 | 24 |
| | | | | |
| NT40-SEMC16-52(OTT) | 16 | 32 | 52 | 17 |
| NT40-SEMC22-52(OTT) | 22 | 40 | 52 | 19 |
| NT40-SEMC27-52(OTT) | 27 | 48 | 52 | 21 |
| NT40-SEMC32-52(OTT) | 32 | 58 | 52 | 24 |
| NT40-SEMC40-52(OTT) | 40 | 70 | 52 | 27 |
| | | | | |
| NT50-SEMC16-55(OTT) | 16 | 32 | 55 | 17 |
| NT50-SEMC22-55(OTT) | 22 | 40 | 55 | 19 |
| NT50-SEMC27-55(OTT) | 27 | 48 | 55 | 21 |
| NT50-SEMC32-55(OTT) | 32 | 58 | 55 | 24 |
| NT50-SEMC40-55(OTT) | 40 | 70 | 55 | 27 |

NT



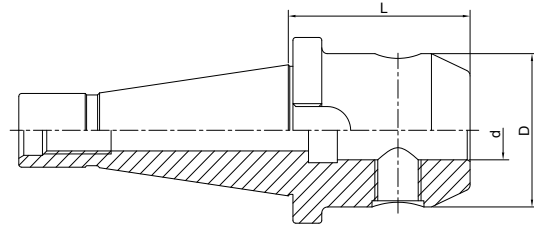
End Mill Holder Weldon 侧固刀柄



DIN6359/1835B

 ≤ 0.005

AD



| Size | d | D | L |
|--------------------|----|----|----|
| NT30-SLA06-40 | 6 | 25 | 40 |
| NT30-SLA08-40 | 8 | 28 | 40 |
| NT30-SLA10-40 | 10 | 35 | 40 |
| NT30-SLA12-40 | 12 | 42 | 40 |
| NT30-SLA16-50 | 16 | 48 | 50 |
| NT30-SLA18-50 | 18 | 50 | 50 |
| NT30-SLA20-63 | 20 | 52 | 63 |
| NT40-SLA06-50(OTT) | 6 | 25 | 50 |
| NT40-SLA08-50(OTT) | 8 | 28 | 50 |
| NT40-SLA10-50(OTT) | 10 | 35 | 50 |
| NT40-SLA12-50(OTT) | 12 | 42 | 50 |
| NT40-SLA14-50(OTT) | 14 | 44 | 50 |
| NT40-SLA16-63(OTT) | 16 | 48 | 63 |
| NT40-SLA18-63(OTT) | 18 | 50 | 63 |
| NT40-SLA20-63(OTT) | 20 | 52 | 63 |
| NT40-SLA25-80(OTT) | 25 | 65 | 80 |
| NT40-SLA32-80(OTT) | 32 | 72 | 80 |
| NT40-SLA40-90(OTT) | 40 | 80 | 90 |
| NT50-SLA06-63(OTT) | 6 | 25 | 63 |
| NT50-SLA08-63(OTT) | 8 | 28 | 63 |
| NT50-SLA10-63(OTT) | 10 | 35 | 63 |
| NT50-SLA12-63(OTT) | 12 | 42 | 63 |
| NT50-SLA14-63(OTT) | 14 | 44 | 63 |
| NT50-SLA16-63(OTT) | 16 | 48 | 63 |
| NT50-SLA18-63(OTT) | 18 | 50 | 63 |
| NT50-SLA20-63(OTT) | 20 | 52 | 63 |
| NT50-SLA25-80(OTT) | 25 | 65 | 80 |
| NT50-SLA32-80(OTT) | 32 | 72 | 80 |
| NT50-SLA40-90(OTT) | 40 | 80 | 90 |



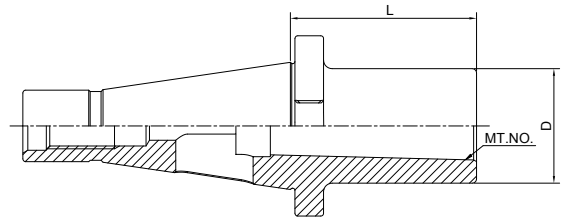
Morse Taper Adapter with Tang
带扁尾莫氏刀柄

DIN6383

A ↗

≤0.005

AD

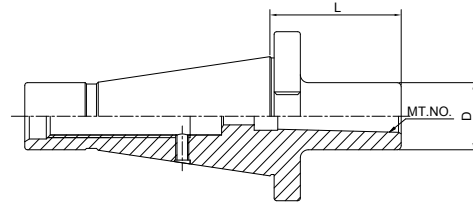
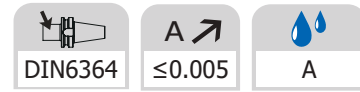


| Size | MT.No. | L | D |
|--------------------|--------|-----|----|
| NT30-MTA1-50 | 1 | 50 | 25 |
| NT30-MTA2-50 | 2 | 50 | 32 |
| NT30-MTA3-75 | 3 | 75 | 40 |
| | | | |
| NT40-MTA1-50(OTT) | 1 | 50 | 25 |
| NT40-MTA2-50(OTT) | 2 | 50 | 32 |
| NT40-MTA3-65(OTT) | 3 | 65 | 40 |
| NT40-MTA4-95(OTT) | 4 | 95 | 48 |
| | | | |
| NT50-MTA1-45(OTT) | 1 | 45 | 25 |
| NT50-MTA2-60(OTT) | 2 | 60 | 32 |
| NT50-MTA3-65(OTT) | 3 | 65 | 40 |
| NT50-MTA4-70(OTT) | 4 | 70 | 48 |
| NT50-MTA5-105(OTT) | 5 | 105 | 63 |

NT



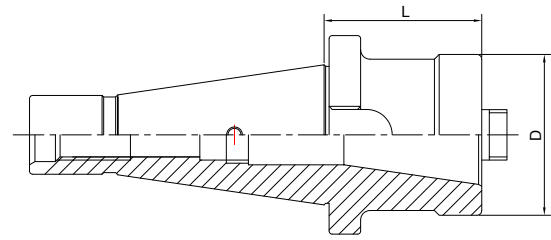
Morse Taper Adapter with Drawbar 带螺纹孔莫氏刀柄



| Size | MT.No. | L | D |
|--------------------|--------|-----|----|
| NT30-MTB1-45 | 1 | 45 | 25 |
| NT30-MTB2-60 | 2 | 60 | 32 |
| NT30-MTB3-70 | 3 | 70 | 40 |
| | | | |
| NT40-MTB1-50(OTT) | 1 | 50 | 25 |
| NT40-MTB2-50(OTT) | 2 | 50 | 32 |
| NT40-MTB3-65(OTT) | 3 | 65 | 40 |
| NT40-MTB4-95(OTT) | 4 | 95 | 48 |
| | | | |
| NT50-MTB1-60(OTT) | 1 | 60 | 25 |
| NT50-MTB2-60(OTT) | 2 | 60 | 32 |
| NT50-MTB3-65(OTT) | 3 | 65 | 40 |
| NT50-MTB4-65(OTT) | 4 | 65 | 48 |
| NT50-MTB5-120(OTT) | 5 | 120 | 63 |

NT


Tool Holder Adatper Sleeve
转换刀柄

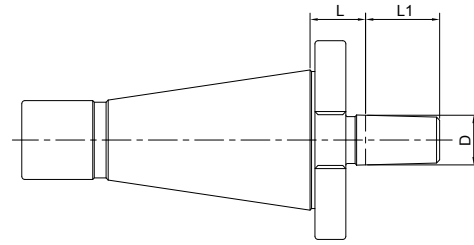
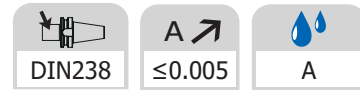


| Size | D | L |
|--------------------|----|-----|
| NT40-NT30-50(OTT) | 51 | 50 |
| NT40-NT40-100(OTT) | 63 | 100 |
| NT50-NT40-50(OTT) | 70 | 50 |
| NT50-NT50-125(OTT) | 97 | 125 |

NT



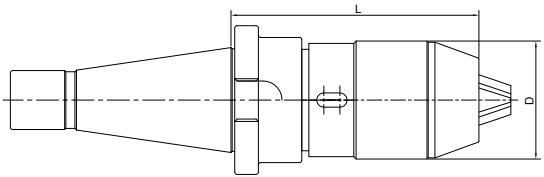
Drill Chuck Adapter 钻接杆



| Size | D | L | L1 |
|----------|-----|----|------|
| NT30-B12 | B12 | 15 | 18.5 |
| NT30-B16 | B16 | 17 | 24 |
| NT40-B12 | B12 | 18 | 18.5 |
| NT40-B16 | B16 | 18 | 24 |
| NT40-B18 | B18 | 18 | 32 |
| NT50-B16 | B16 | 20 | 24 |
| NT50-B18 | B18 | 20 | 32 |



APU Drill Chuck Holder
APU 钻夹头刀柄



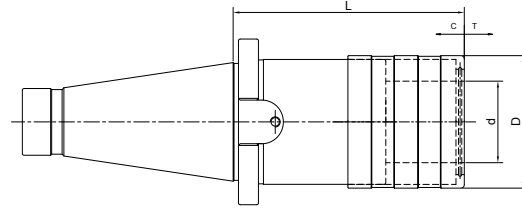
| Size | D | L | Capacity |
|---------------------|----|-----|----------|
| NT30-APU08-80 | 38 | 80 | 1-8 |
| NT30-APU13-100 | 48 | 100 | 1-13 |
| NT40-APU08-85(OTT) | 38 | 85 | 1-8 |
| NT40-APU13-110(OTT) | 48 | 110 | 1-13 |
| NT40-APU16-105(OTT) | 53 | 105 | 3-16 |
| NT50-APU08-95(OTT) | 38 | 90 | 1-8 |
| NT50-APU13-100(OTT) | 48 | 100 | 1-13 |
| NT50-APU16-110(OTT) | 53 | 110 | 3-16 |

NT



Quick Change Tapping Chuck with Length Compensation

弹性快换攻丝刀柄



| Size | d | D | L | T | C |
|----------------------|----|----|-----|------|------|
| NT30-TC312-55 | 19 | 36 | 55 | 7.5 | 7.5 |
| NT30-TC820-86 | 31 | 53 | 86 | 12.5 | 12.5 |
| NT40-TC312-55(OTT) | 19 | 36 | 55 | 7.5 | 7.5 |
| NT40-TC820-86(OTT) | 31 | 53 | 86 | 12.5 | 12.5 |
| NT40-TC1433-132(OTT) | 48 | 78 | 132 | 22 | 22 |
| NT50-TC312-62(OTT) | 19 | 36 | 62 | 7.5 | 7.5 |
| NT50-TC820-90(OTT) | 31 | 53 | 90 | 12.5 | 12.5 |
| NT50-TC1433-117(OTT) | 48 | 78 | 117 | 22 | 22 |

